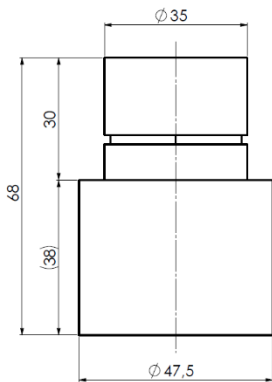
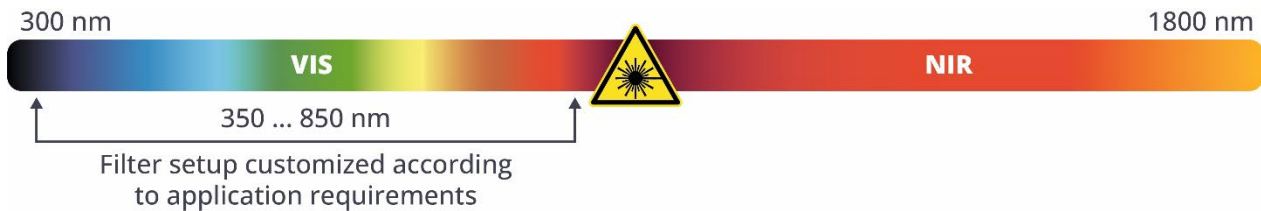


TECHNICAL DRAWING



SPECTRAL RANGE



PHOTOSENSITIVITY



SPECIFICATIONS

Dimensions w/o cable	Ø 47.5 x 68 mm
Weight	315 g
Recommended integration	Laser source (laser processing head on request)
Mechanical connection	Clamping Ø 36 mm
Electrical connection	RJ45

ACCESSORIES

Required	Sensor cable 30 m (RJ45/m - RJ45/m)
Optional	Adapter (several solutions available and customized solutions on request)
Optional	Sensor beam splitter (in order to use two sensors simultaneously)